



SOFTWARE DEFINED NETWORKS

# **iQuila Cloud Guide to iQuila 14 Day Trial (Full Guide)**

IQ22073r4

**This Document Applies to:**

**iQuila Cloud**

[www.iQuila.com](http://www.iQuila.com)

# Welcome to iQuila 14 Day Trial.

On reading this document you have successfully enrolled for a 14 Day Trial of iQuila Cloud and have received the email confirmation that your iQuila Trial Company has been provisioned and ready for you to access. It is recommended that you read through this document to get a basic understanding of how iQuila works, how to add devices\*, how to install the client software and how to connect to devices across the iQuila Cloud.

\*Device means any Windows 10 PC, Laptop, Windows Server 2016-19, iPhone, iPad, Android Tablet, or phone

## What is iQuila Cloud?

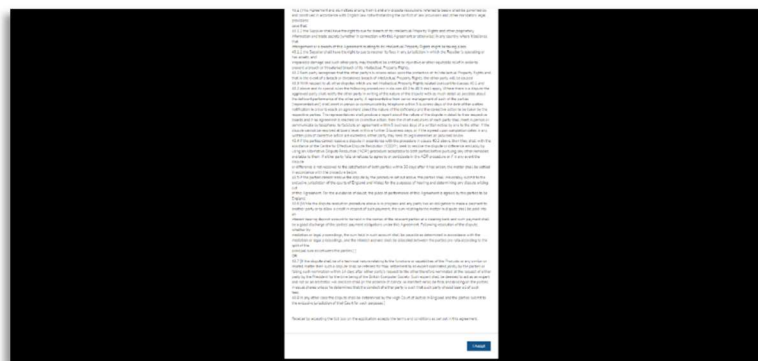
iQuila Cloud is an “always-on” secure overlay, Layer 2 network, that leverages AI, network virtualization, Cloud, and SDN technologies. It offers a very quick deployment model wherein Cloud Hosting, VMs, servers, desktops, laptops, or mobile devices are easily networked with each other, using the advanced overlay network feature. iQuila Cloud also offers you the ability to link entire networks using Layer 2 via the Cloud, negating the need for VPN and expensive, complicated, and restrictive MPLS lines. There are no detailed configuration or setup necessary, no hardware costs to manage, and users can benefit from ‘head-office’ levels of connectivity, no matter where they are located.

## The Aim of this Document.

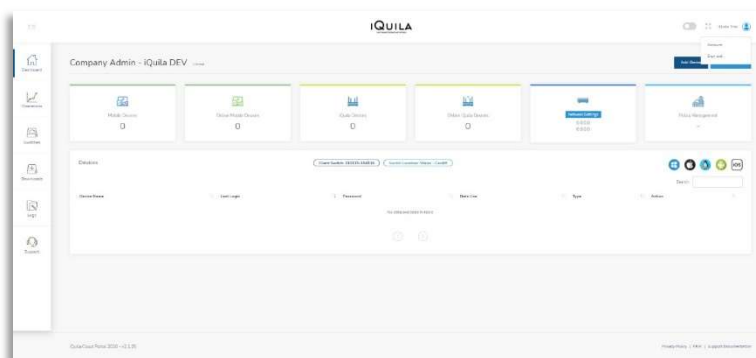
This document aims to give a quick insight into using iQuila from receiving the 14 Day Trial email to using the iQuila Cloud Client in a basic operation. The document sets out a scenario where iQuila could be used. This is just a basic scenario model as iQuila has so many possibilities of use to be listed in this document. You can use parts of the scenario to setup iQuila in your environment.

## How to access your Company portal.

To login to the portal click here <https://cloud.iquila.com> or the click link in the 14-Day trial email, or type the address in your browser. Sign in with your account details found on the email sent when you registered for your 14-day trial. The EULA will display only for the first time you log in, scroll down and click I Accept.



## Welcome to your Company Admin Panel or “Dashboard”



An introduction to the portal and its operation is covered in-depth in another document but one of the first things to do is to change the temporary password and turn on two-factor authentication. These are both optional at this point.

## Changing your temporary password.

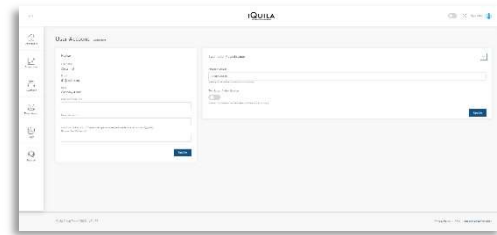
The first thing is to give you a new password and turn on Two Factor Authentication. (Both are optional)

If you go to the top right to your name, click on it, you get the option Accounts. Click this and it will open the next screen.



### To Change the Password:

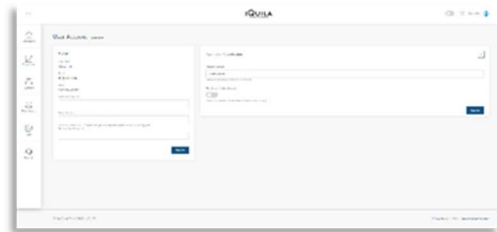
Just fill in the right-hand side part of the form to change your password. Your old password is the temporary one that is on the email and that you just logged in with. Enter your new password then confirm the new password again. When ready just click the blue update button.



## Turning on Two Factor Authentication.

### Turning on Two Factor Authentication:

On the right-hand side of the screen titled Two Factor Authentication. Enter your mobile phone number and slide the switch to ON, then click the blue update button. Once switched on you will need to have your phone handy when you require access to the portal. You will receive a text message with a 7 digit numbers. Just log into the portal with your username and password and the portal will send a text to your mobile and ask you to enter that number.



At this stage, we can log out of the portal. The operation of the portal is covered in another document.

## Laying out the Scenario to use iQuila.

To use iQuila we must understand how to add Devices in the iQuila Portal. How to install the iQuila Cloud Client software, and how to use iQuila when done.

We need to set up an example **iQuila Cloud Scenario**: This scenario can be related to how you use iQuila.

In this scenario, we will be using four Windows devices\*. You could just use two, the office PC and the home PC. The same scenario will work.

\* A Device is used by iQuila to describe a computer that iQuila can use. This can be any Microsoft Windows 10 or Windows Server 2016-19 computer. An Apple Computer (iPhone, iPad, iMac). An Android OS9+ (Phone, Tablet). A Linux (CentOS, Ubuntu) Computer.

Device Name	Description
OfficeFileSvr1UK	The Main Target Device. A Windows File Server 2016 in the main UK office.
OfficePC2UK	2 <sup>nd</sup> Target Device. A Windows 10 <sup>Pro</sup> Desktop PC in the main UK office.
HomePC3UK	Remote 3 <sup>rd</sup> Device. A Windows 10 <sup>pro/home edition</sup> Laptop at your house (UK).
RemotePC4US	Remote 4 <sup>th</sup> Device. A Windows 10 <sup>Pro</sup> Desktop PC in the USA office.

### What are these devices?

**OfficeFileSvr1UK** is the company file server located in the main UK office, and stores all company files, accessed via mapped drives. This will be our main target device, as such will be the device all want to connect to.

**OfficePC2UK** is also located in the main UK office and our 2<sup>nd</sup> Target device. It can access all company files on OfficeFileSvr1UK via mapped drives as these two devices are on the same company network in the same office.

**HomePC3UK** is at home and you want to use this for homeworking. It is connected to the internet. You aim to take control of your office PC and do your work as if in the office.

**RemotePC4US** is located in your USA office. You would like this PC to have access to the file held on the company file server in the same way as your office PC so that your colleague in the US can access up-to-date files held in the UK office. The PC is connected to the internet in the US but has no way to access the file server in the UK.

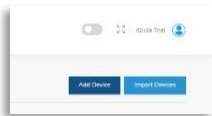
### How can we achieve this with iQuila?

First, we need to set up the 4 devices in the iQuila Cloud Portal. you can use any name to describe these devices as they are virtual devices we are creating in the portal. For this scenario, we will use the names above. In the next section, we will start by adding the devices.

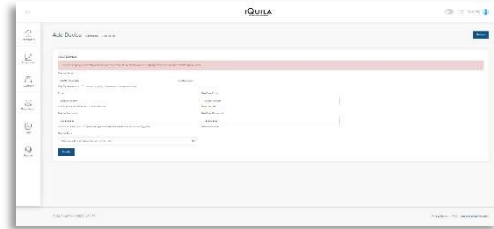
## Adding Devices in the iQuila Cloud Portal.

Login to the portal at <https://cloud.iquila.com> as in “How to access your Company portal”

On the main page click the dark blue **Add Device** button.



This opens the main add a device form page.

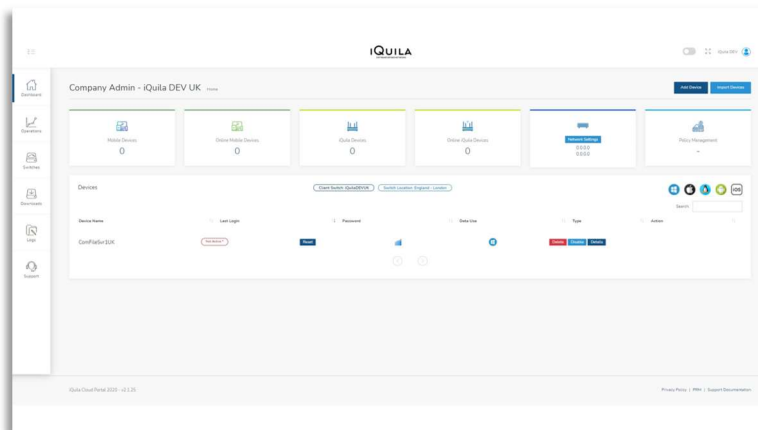


We will start by filling out the form with the Main Target Device, the company file server.

Device Name <sup>required</sup>	ComFileSvr1UK
email address confirm email address	This is to receive details about the device, installation guide, and the client software download link. For this scenario, we will use the same email address for convenience. <a href="mailto:email@domain.com">email@domain.com</a> but you can use your email address to follow live.
Password <sup>required</sup> confirm password	Required as part of the device connection setup.
Device type <sup>required</sup>	The type of device you are connecting to iQuila. Each device has a unique way to connect, details of this are in the email sent when the device is added. In this scenario we will use: Windows 10 / Windows server 2016-19

Click the blue Create button.

You will be taken back to the main page and you should see your main target device. At the same time, you should receive an email with details about this device. Please keep the email for reference later. Let's add the other 3 devices.



Go to **Add Device** and repeat the process with the details below each time for the 3 other devices.

**2<sup>nd</sup> device is the Office PC.**

Device Name <sup>required</sup>	OfficePC2UK
email address confirm email address	email@domain.com
Password <sup>required</sup> confirm password	Use the same password for convenience.
Device type <sup>required</sup>	Windows 10 / Windows server 2016-19

Click the blue Create button.

**3<sup>rd</sup> device is the Home PC.**

Device Name <sup>required</sup>	HomePC3UK
email address confirm email address	email@domain.com
Password <sup>required</sup> confirm password	Use the same password for convenience.
Device type <sup>required</sup>	Windows 10 / Windows server 2016-19

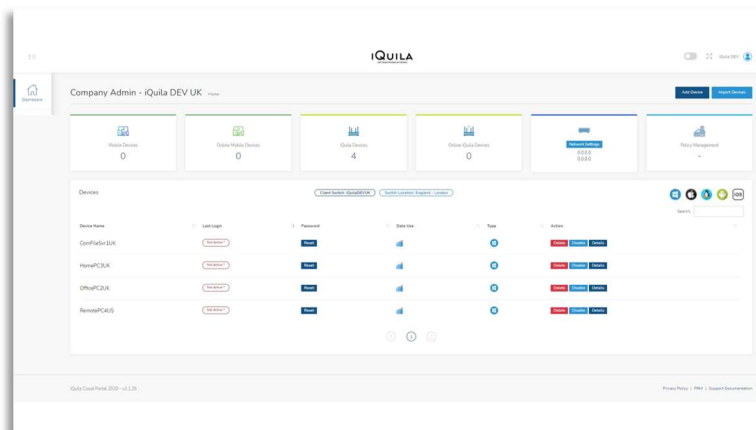
Click the blue Create button.

**4th device is the Remote PC in the US.**

Device Name <sup>required</sup>	RemotePC4US
email address confirm email address	To receive details about the device required to connect iQuila. Now as this device is in the USA for this scenario, we will use the same email address as the other devices (email@domain.com). This email would be sent to the person that needs to install the iQuila Client software.
Password <sup>required</sup> confirm password	Use the same password for convenience.
Device type <sup>required</sup>	Windows 10 / Windows server 2016-19

Click the blue Create button.

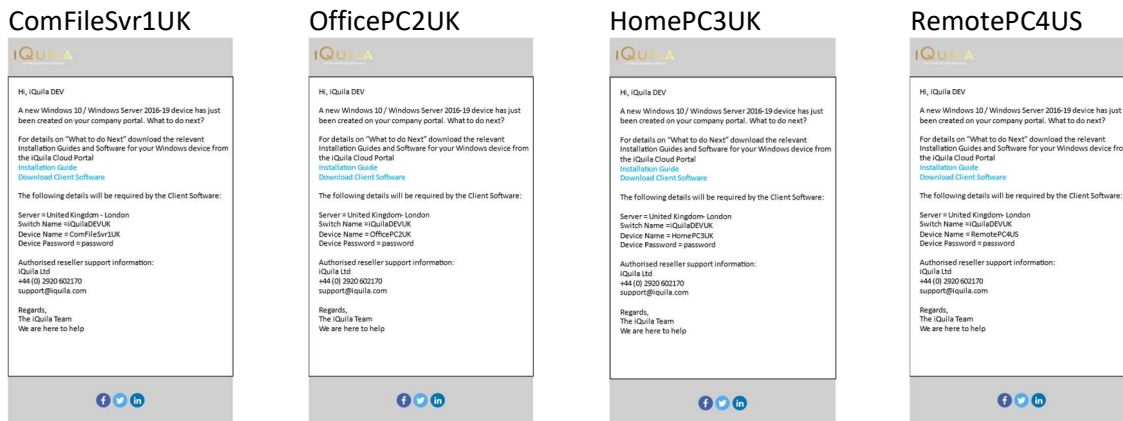
With all 4 devices added the main page should look like this.



You can now log out of the portal and move to the next phase.

## Reading the email(s) sent when a device was created.

After adding each device, a notification email is sent to the email address entered in the Add Device form. Notifying you that a device was just created and containing information that is required to download the Client software and details required when installing the Client Software to connect the iQuila Client to the iQuila Cloud. In this scenario the example emails are shown here:



Each email contains two links.

1. Link to download the Installation Guide PDF. Each installation guide is unique for each type of device. You must read the guide, for this scenario, we will quickly cover what is in the guide in the following section and pages.
2. Download the Client Software. They are many ways to download the client software but for this scenario, we will stick to the email link.

Other information on the email:

- **Server:** The Servers region/country that a virtual switch was created on when you set up the 14-day trial. This will be required when installing the client software.
- **Switch Name:** This is the virtual switch that will be used to link all your devices when using the iQuila Software. This will be required when installing the client software.
- **Device name:** The name of the virtual device you created e.g. ComFileSvr1UK
- **Password:** The password you entered when you added the device.
  - The device name and password will be required by the client software to connect to the iQuila V-Switch.

Side note: Virtual switches and the virtual network are covered in a more advanced guide if you wish to know more.



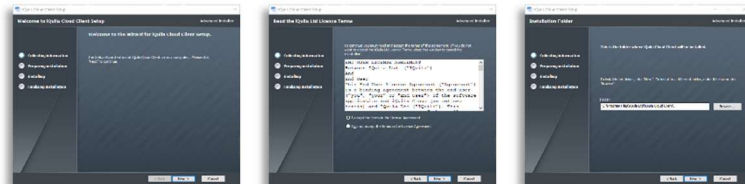
## Installing the iQuila Client on the computer.

In this scenario, we have two target computer that needs the iQuila Client installed on, ComFileSvr1UK and OfficePC2UK. Let start with the main target computer ComFilSvr1UK.

On computers like a File Server, you may need to download the software on your desktop first and place it in a location that you can access it from the file server. In this scenario, we will use a Webmail account to access the emails and download the software.

Login to the server, open the email app, and look for the email(s) from iQuila Cloud Portal/New Device Added. Open the email and click the Download Client Software link and wait for the software to download. It will most likely be in your browser's download folder, or you may be able to run it from the download section on the bottom right of the browser window. Locate the file windowsclient.exe and double click on it to run.

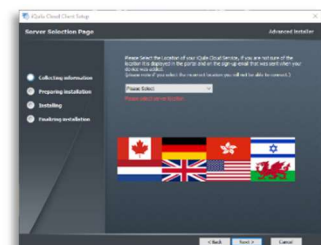
You've launched the software and now it's starting to install. Let's go through the installation in stages. It opens with the first screen below. (left to right)



Click Next, Next, Next on these three screens. The next screens shown below are important, and this is where the information on the email comes into play.

### Select the Server location:

This is on the email as Server = United Kingdom – London.



On the dropdown list select the United Kingdom – London  
Click Next.

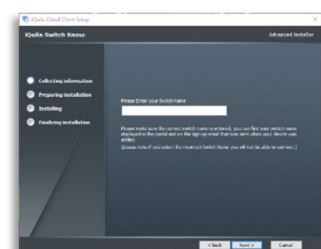
**NOTE:** It is important that the correct server is entered, so please check carefully.



### iQuila Switch Name:

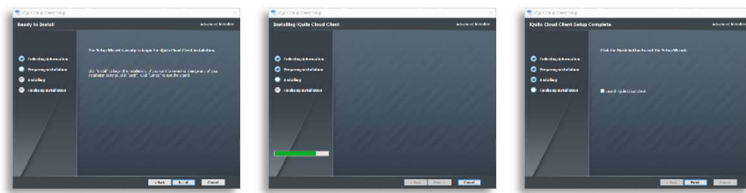
On the email Switch Name = iQuilaDEVUK  
Type it in:

**NOTE:** It is important that the switch name is entered correctly, please check carefully and check the spelling of the switch name.



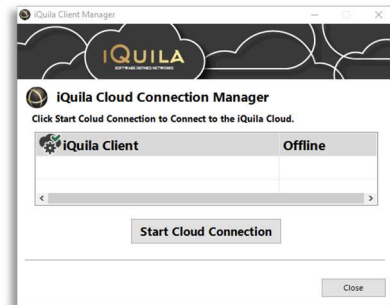
Click Next.

These screens finalize the install, just click Install, wait, tick Launch iQuila Cloud Client, and click Finish.

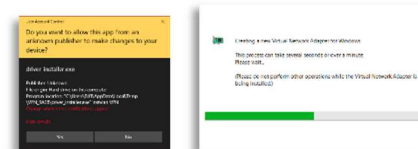


When launched this screen should be displayed on the screen.

Click Start Cloud Connection.



Wait for it to complete the installation of a network driver and VPN connection. You may get asked to allow the driver to run. The yellow/black screen.

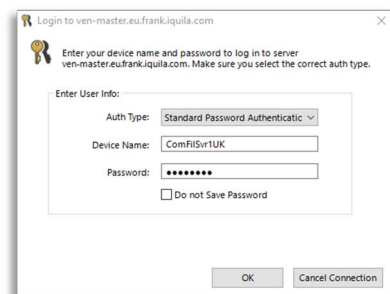


Finally, you will be asked to log in.

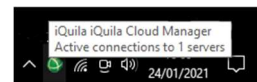
Enter the Device Name and Password that is found in the email.

Click OK

The screen will disappear if the detail is correct. If not please recheck the details in the email.



This icon will appear in the taskbar and will be cycling Red/Green to show the connection to the virtual switch is active.

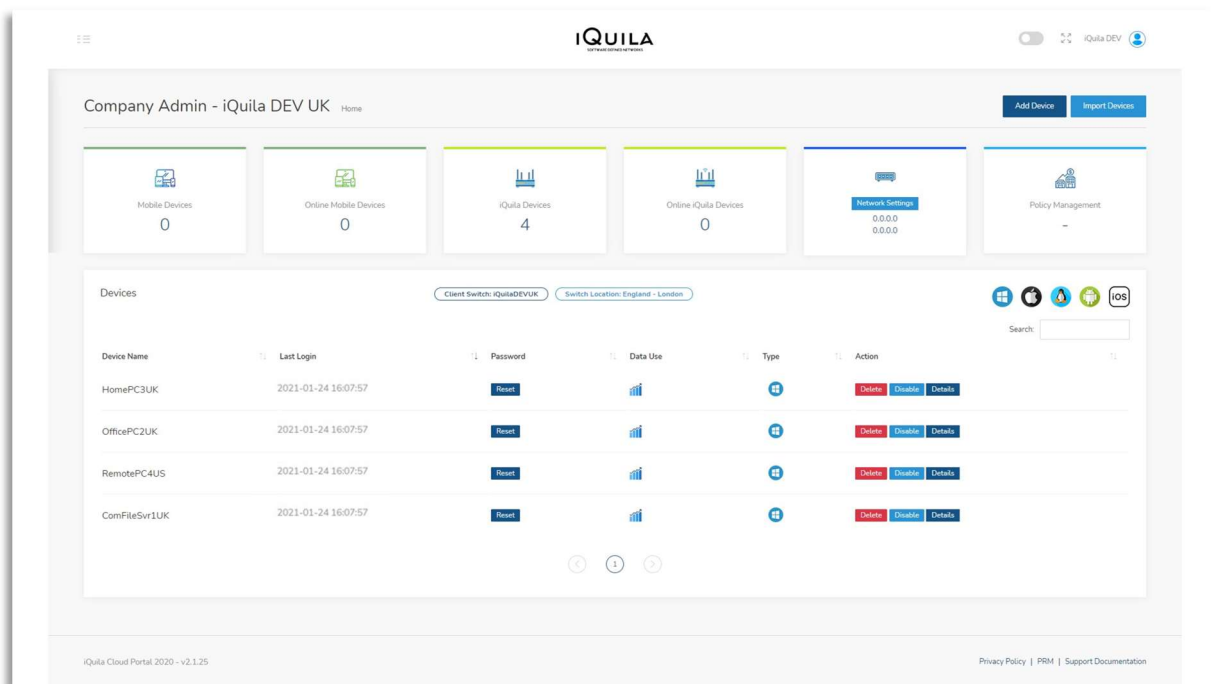


The software is now running in the background and set to start when the computer is restarted or powered on.

Repeat the same procedure for the office PC and the home PC. The Remote PC in this scenario is located in the US office so you need to get your colleague to install the software on that PC. Your colleague only needs the email sent when the device was created to do this. The installation guide link is in the email and is the same procedure as in this document.

After we have installed the software on all four devices we now need to check that the iQuila Cloud Client communicating with servers. The icon in the Taskbar tells us that it is connected but we also need to check on the portal. Log back into the portal. <https://cloud.iquila.com>

When logged in we should see all four devices connected as shown here on the main portal page.



The last login column shows that the devices are connected. A red “not active” would show if a device is offline.

What next?

- The iQuila Cloud Client is installed and running on all 4 Devices.
- All four devices are showing connected in the portal.
- How do you connect to them?
- How do you use iQuila?

## The Home PC.

This PC as until now been just device number three. The aim was to take remote control of the Office PC so that you can work from home and to have access to all the resources etc. Files on the Company File Server and Company Application that are installed on the office PC and only available when in the office.

There is two way to achieve this using iQuila. One just gives access to the File Server. The other, the main one we want for home working is Remote Desktop Connection or RDP. This is a feature built into the Windows operating system. Below are the steps required to make the connection to the Office PC using Remote Desktop Connection.

## Setting up Remote Desktop Connection.

On the Home PC login.

In this scenario I have the iQuila client open to show at it is connected to the iQuila network.

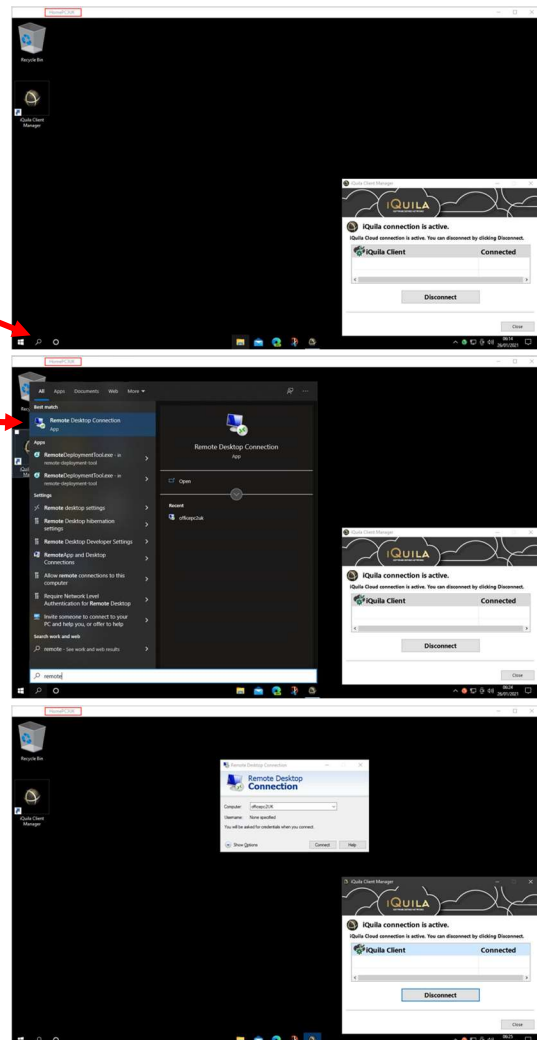
To launch Remote Desktop Connection.  
Click on the search icon.

Start typing the word remote and you should get this in the list.

Click on it.

It will now open Remote Desktop Connection.

Follow the setup in the next section below.



Enter the name of the Office PC.

In this scenario OfficePC2UK

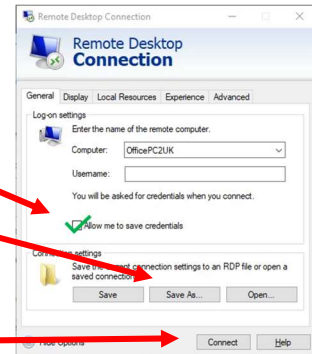
Now we can click Connect and follow the sequence of popup boxes but, we need to follow a way that 0... us to automatically access the Remote Desktop Connection without the need to repeat the process over and over.

Click Show Options



Tick Allow me to save credentials box.

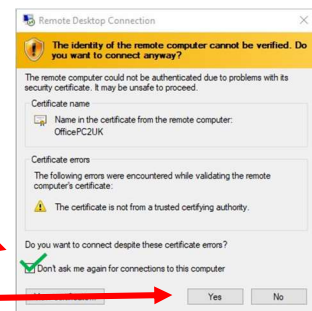
Click on the Save As box.



This will allow you to save the RDP connection to the desktop. Give it a name and click save.

Click Connect

Tick this box.



Click YES

This final box now pops up asking you for the username and password to access the Office PC.

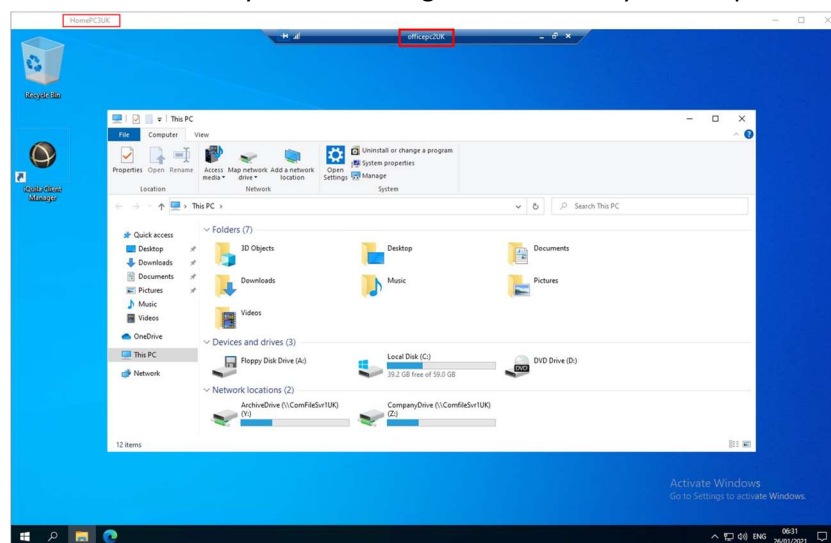
This is the login name and password that you use when at your PC in the office.

Tick the "Remember me box".

Click OK



After a wait, while it connects and you will be given a full-screen view of the Office PC with complete control over it. Just like you were sitting in the office at your computer.



## Setting up Mapped Drives.

We mentioned two ways to connect to the from the Home PC. Remoted Desktop Connection as above. The other will just connect to the shared resources on the File Server. That same way that the Drives on the Office PC are set up via Y and Z Drives as above.

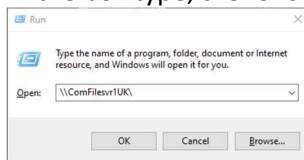
This other way is how the Office PC in the USA or in any other office around the globe would connect. This method connects only the shared resources on the File server and the security setting of those shares. So, if you are not allowed to access a folder or only allows to view then those security settings will still be in operation. We will not go into details on security settings but that it is linked to the user account that you require to access the shared resources.

To achieve this, we need to set up a mapped drive to the File Server. Pre-requisites for this will be the name of the File Server which in this case is ComFileSvr1UK and your login account details of your Office PC. Follow the procedure below.

Hold the Win Key down and at the same time press the R key (Win+R)

This opens the Run command

In the box type, the following: [\\comfilesvr1UK\](#)



This will now open two windows. The File Explorer windows and a Windows security box.

Enter your username and password.

Tick the box "Remember my credentials. (This allows repeated access to the mapped drive without the need to log in all the time).

Click Ok

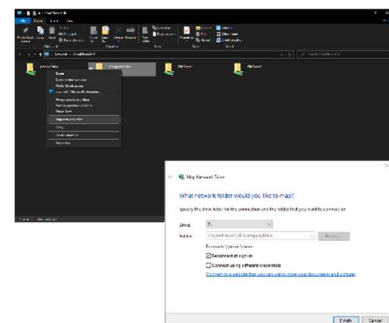
File Explorer opens showing all the shares on the File Server.

Right-click on a share, in this case, Company Drive.

Click Map network drive.

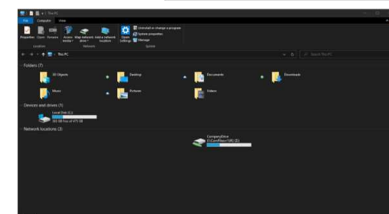
Select a Letter for the Drive:

Click Finish.



If you close File Explorer and reopen it, you will now see the mapped drive.

Replete the process to add more mapped drives.



This way of connecting to the File Server would be the way any remote device in any office around the globe could connect. And in this scenario how Remote4PCUS would connect to allow access to the company files in the UK.

## Contents

<b>Welcome to iQuila 14 Day Trial .....</b>	<b>2</b>
<b>What is iQuila Cloud? .....</b>	<b>2</b>
<b>The Aim of this Document .....</b>	<b>2</b>
<b>How to access your Company portal .....</b>	<b>3</b>
<b>Changing your temporary password. ....</b>	<b>4</b>
<b>Turning on Two Factor Authentication. ....</b>	<b>4</b>
<b>Laying out the Scenario to use iQuila. ....</b>	<b>5</b>
<b>Adding Devices in the iQuila Cloud Portal.....</b>	<b>6</b>
<b>Reading the email(s) sent when a device was created:.....</b>	<b>8</b>
<b>Installing the iQuila Client on the computer. ....</b>	<b>9</b>
<b>What next? .....</b>	<b>11</b>
<b>The Home PC. ....</b>	<b>12</b>
<b>Setting up Remote Desktop Connection. ....</b>	<b>12</b>
<b>Setting up Mapped Drives.....</b>	<b>14</b>