



SOFTWARE DEFINED NETWORKS

iQuila Cloud Guide to Installing the iQuila Cloud Client

IQ22067r5

This Document Applies to:

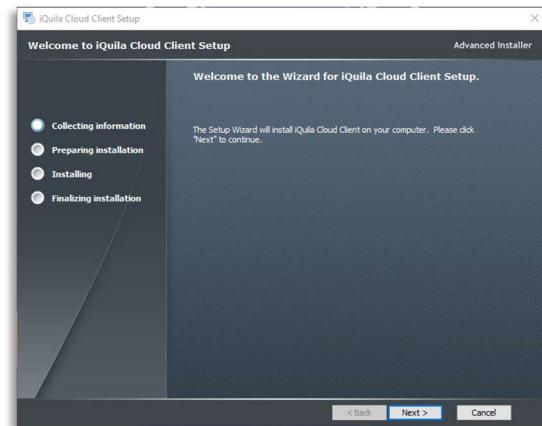
iQuila Cloud

www.iQuila.com

iQuila Cloud Guide to Installing the iQuila Cloud Client

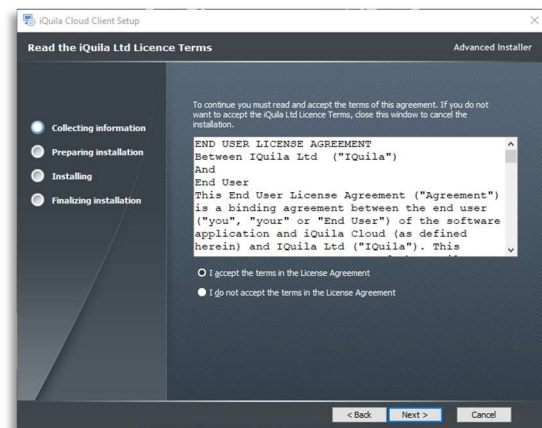
1. Installing the iQuila Cloud Client:

Click next.



2. EULA:

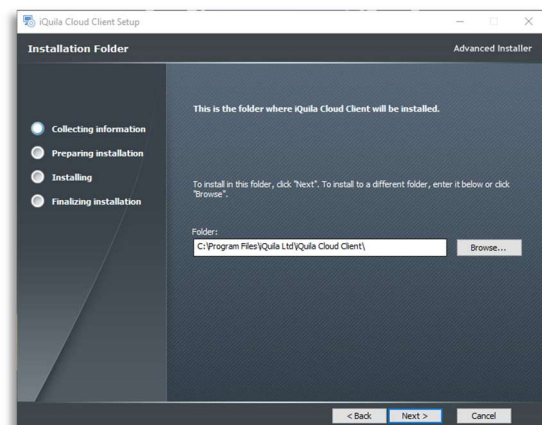
Accept EULA and click next.



3. Installation location:

You can change the default location of the install folder if you so require.

Click Next.



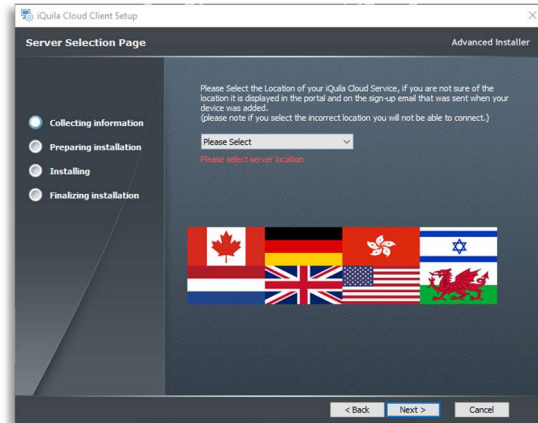
4. Server Selection Page:

Please note; if you select the incorrect server here you will not be able to connect when the installation as finished.

The information for the correct server is in the sign-up email sent to you.

Select the server from the dropdown box.

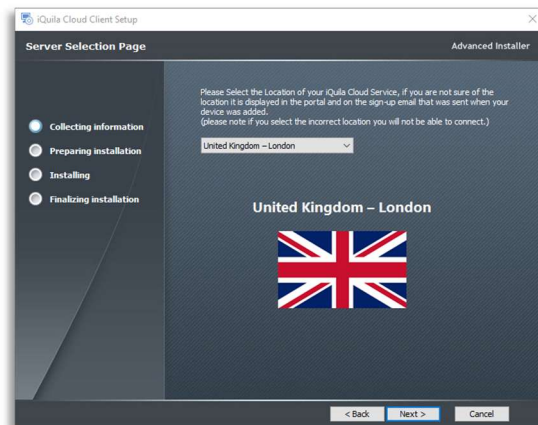
Click next.



5. Server Selection Page:

Check that the server is correct.

Click next.



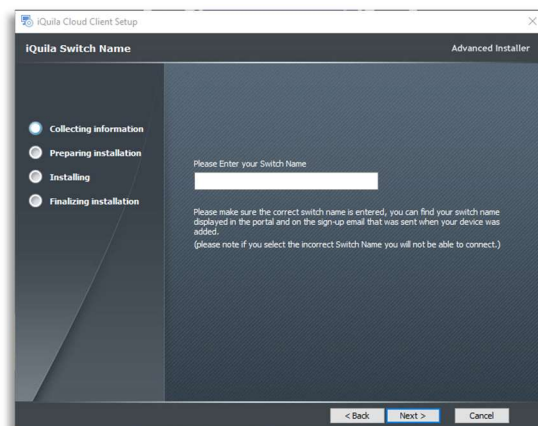
6. Enter Switch Name:

Please note; if you select the incorrect server here you will not be able to connect when the installation as finished.

The information for the correct server is in the sign-up email sent to you.

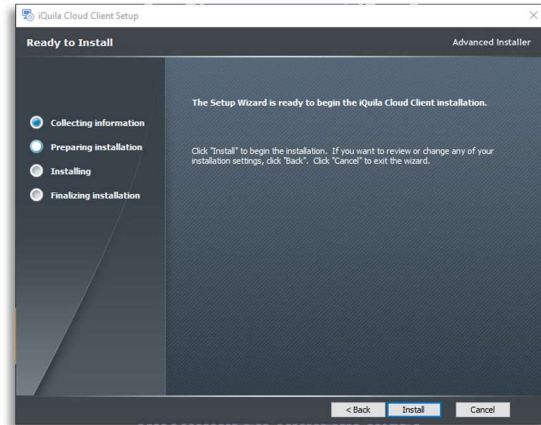
Enter Your Switch name.

Click next.

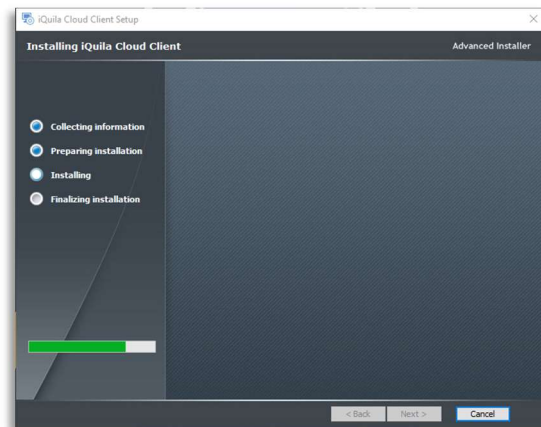


7. Begin Installation:

Click next.

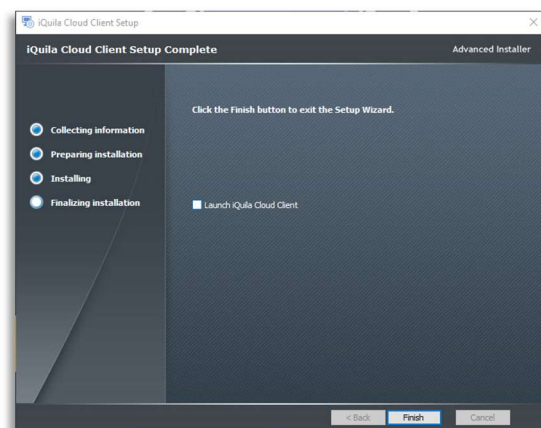


8. Installing Progress:



9. Installation Finished of the Client:

Tick the Launch iQuila Cloud Client to finish the setup procedure and start the next phase. If you do not tick Launch the you will have to start the iQuila Cloud Client from the desktop icon or the Start Menu.



10. VEN Easy Connection Manager:

When all is finished you will be presented with this popup.

Start VEN Connection

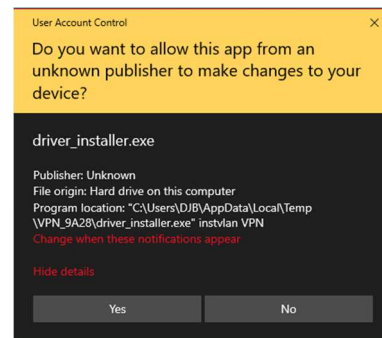
On first use click the Start VEN Connection button it will proceed to install Network drivers. Please follow the instructions.



11. UAC:

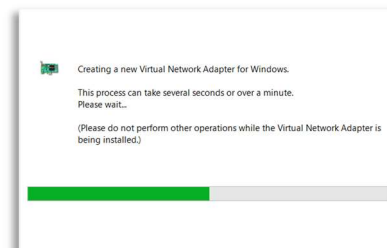
In some instances, the UAC will kick in and you may get this popup. You will be requested to allow the installation of the network Driver setup.

Please allow the change by clicking YES.



12. Installing the VNA:

This part creates a Virtual Network Adaptor (VPN). This may take a minute.



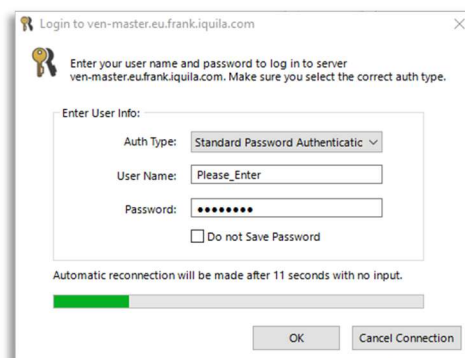
13. The login screen:

Please enter the Username and Password supplied in the email sent to you.

Note: This screen will refresh after 11 seconds, if you miss entering your Username and Password just wait for the refresh.

If you chose not to save your Password, you will be requested for it every time you go to connect.

This popup will disappear when a successful connection is made, and you are now ready to go.



14. Troubleshooting:

If for any reason you do not get the login popup and the icon in the Taskbar if flashing RED/GREEN fast, then the switch name was incorrectly entered.

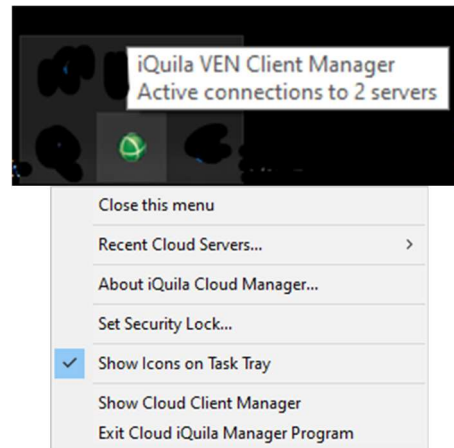
Please contact iQuila Support:
Email: support@iquila.com



15. The Taskbar Icon:

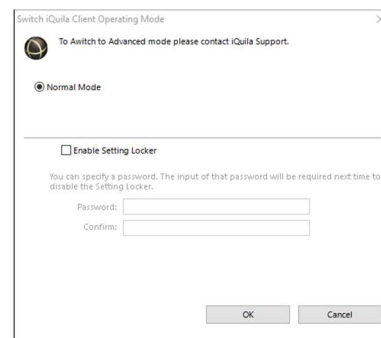
The iQuila Icon flashes RED/GREEN steady when connected. If it flashes RED/GREEN fast, then there is an issue with the connection.

Right click on the icon to access a host of sub options.



16. Set Security Lock: (optional)

The Set Security Lock allows you to totally lock out this right click option so that you must enter the password to access it.



17. Start Menu: (iQuila Support Information Tool)

On the Start Menu. This option iQuila Support Information Tool may be required by iQuila Support to provide diagnostic logs.

