

# **IQUILA**

SOFTWARE DEFINED NETWORKS

## **iQuila Cloud Installing iQuila Bridge Client.**

**iQ22071r7**

**This Document Applies to:**

**iQuila Cloud**

[www.iQuila.com](http://www.iQuila.com)

## Contents

<b>Introduction:</b> .....	3
<b>Prerequisites:</b> .....	3
<b>Installing the iQuila Bridge.</b> .....	4
<b>Configuring the iQuila Bridge.</b> .....	6
<b>Viewing Active Sessions.</b> .....	8

# Guide To Setting Up The iQuila Bridge.

---

## Introduction:

The iQuila Cloud Bridge is an advanced A.I. driven application that can bridge your entire network to the iQuila Cloud Layer 2 virtual switch, this advanced software can be used in several different scenarios. This document will provide instructions on installing and setting up the Bridge software. You will be required to have a good understanding of Layer 2 networking.

Please use this software with great caution, incorrect use of this software could expose your network or cause network Loops.

*(Please take care not to cause a Layer 2 loop).*

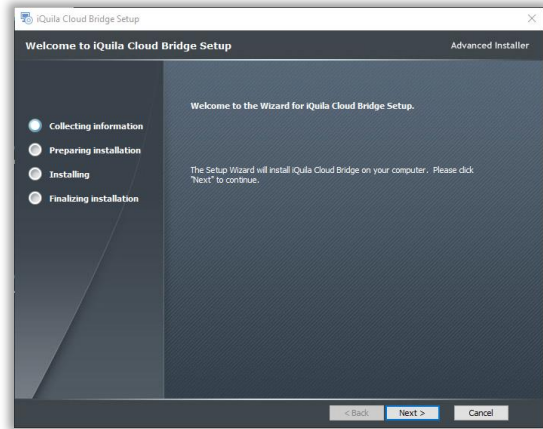
## Prerequisites:

Create a Bridge Device on your iQuila Cloud account. An email will be sent to you if you enter an email address, otherwise you can download the client via your iQuila Bridge device in the iQuila Cloud Portal. Save it to the Windows Server or Windows PC that you would be installing the bridging software on.

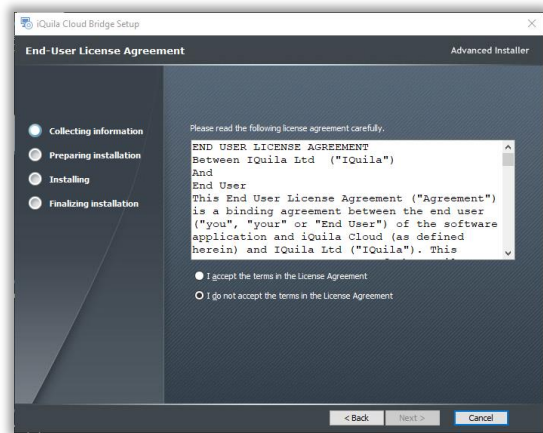
*(Please note, this software should not be installed on laptops or tablet devices).*

## Installing the iQuila Bridge.

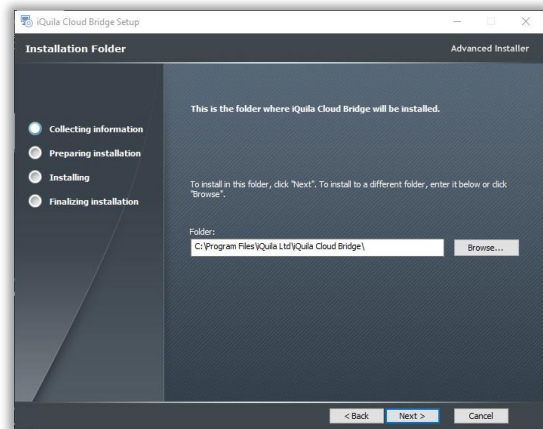
Install the iQuila Bridging software by launching the application from the email link or from the device download tab in the Cloud Portal.



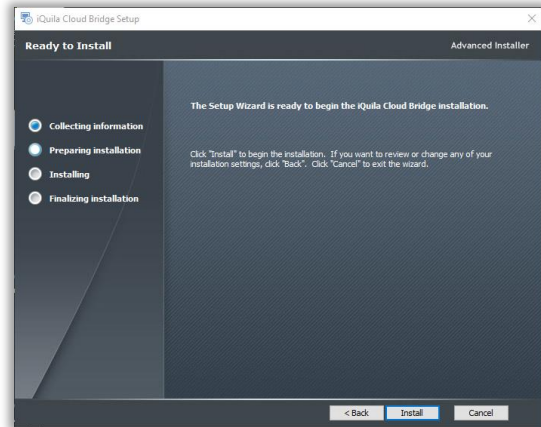
Accept the License Agreement.



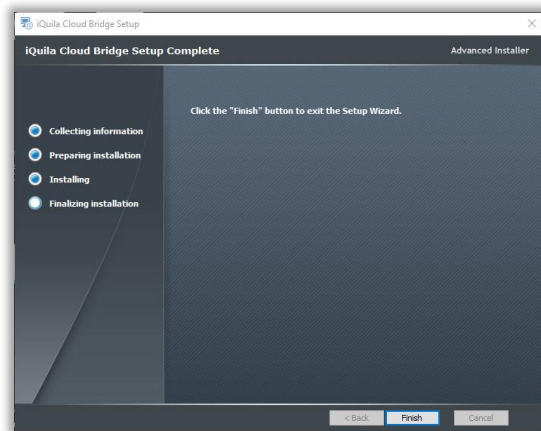
You may change the install path of the application, but we would recommend this is left to the default path.



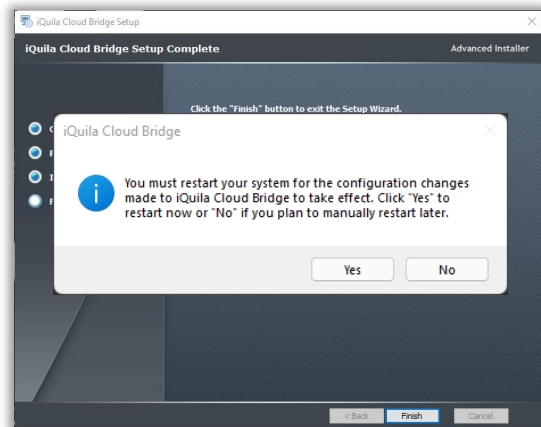
Once the wizard is ready, proceed with the install.



Click finish.

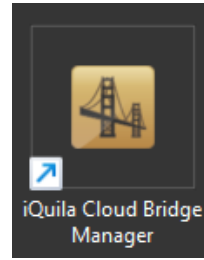


**You must restart your system for configurations to take effect.** This is mandatory for the software to function correctly.



## Configuring the iQuila Bridge.

To launch the iQuila Bridge application double click on the iQuila Cloud Bridge Manager icon that has been placed on your desktop. This will launch the Management Web Interface.



Sign in with the default credentials.

Username = console

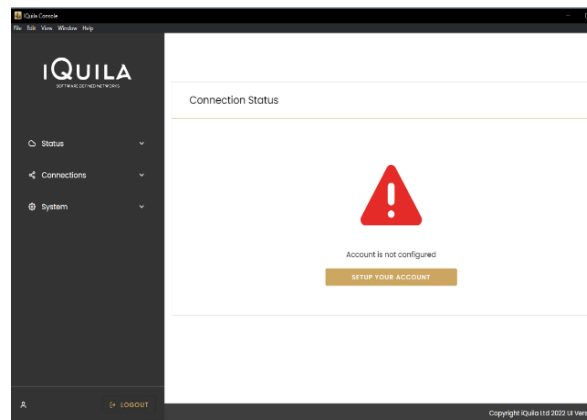
Password = !console



First time setup you need to enter your device account details to connect the Bridge to the iQuila Switch.

Click Setup Your Account.

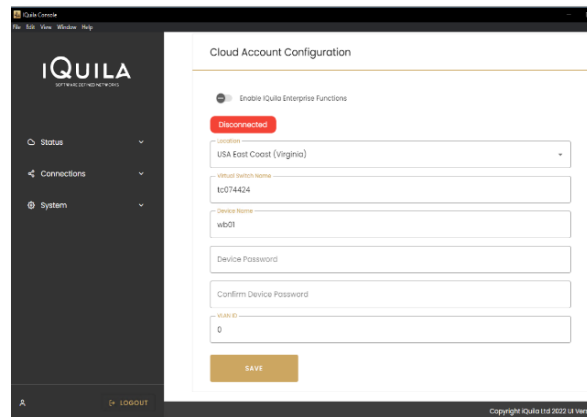
(These details will be sent in an email if you chose that option when you created the Bridge device.)



Enter the account details.

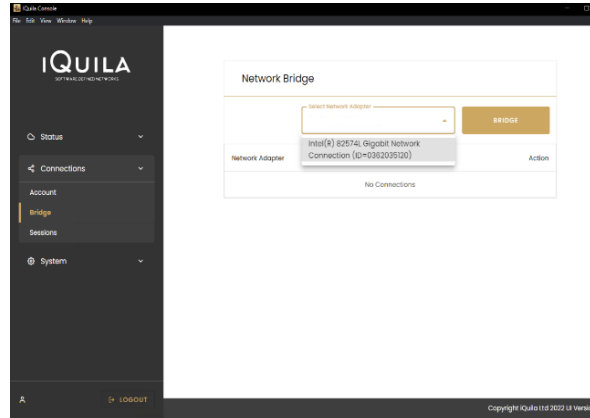
Unless instructed leave VLAN at 0

Click Save when done and you will be automatically directed to the next page.



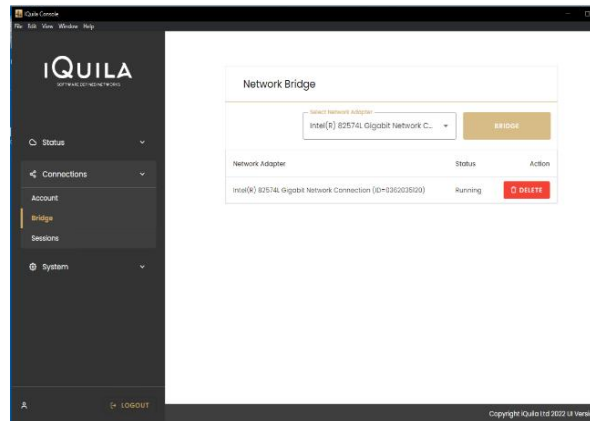
Select the Network Interface that you wish to Bridge from the dropdown list.

(Multiple network interfaces may be added but please bare caution as this may join those networks as one.)



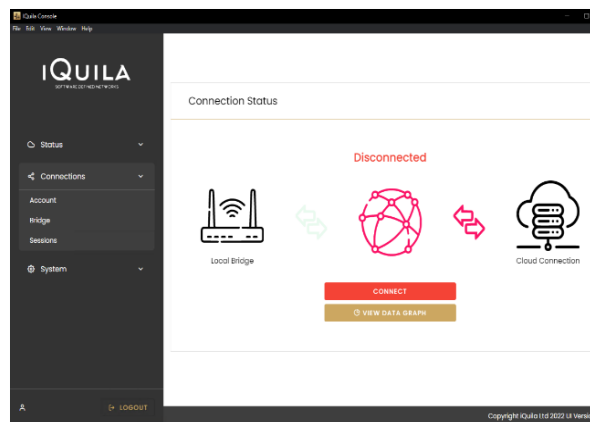
Click Bridge to add the Interface.

After you will be automatically directed to the Status page.

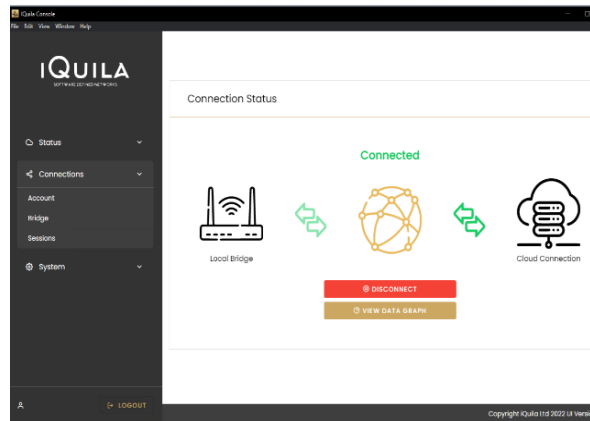


The Green left-hand arrow now indicate that the network has now been Bridge and is connected.

Click Connect to connect this Bridge to the iQuila Cloud Switch.

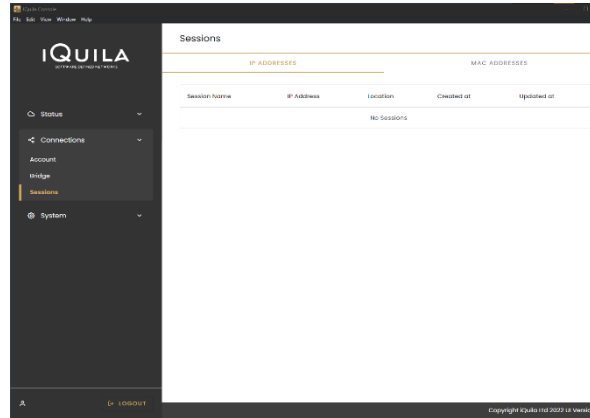


Both arrows now show Green to indicate that you now have a Bridged Network.

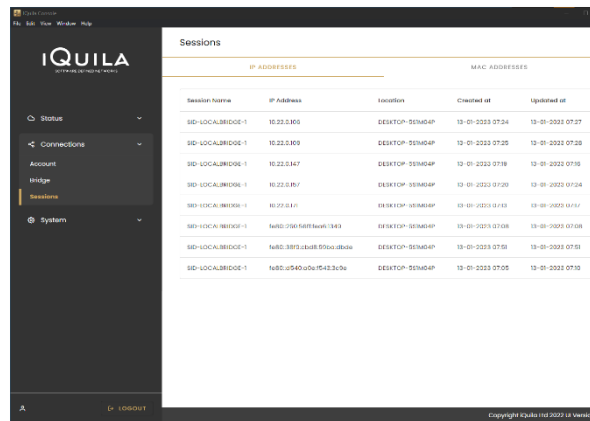


## Viewing Active Sessions.

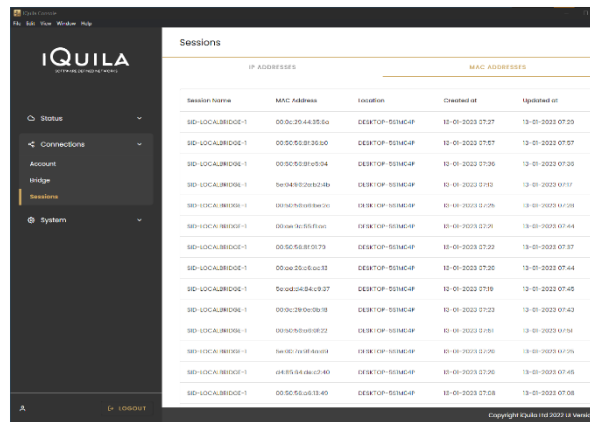
The Sessions page shows what activity is running over the bridged network.



The IP Address Sessions displays all active IP addresses



The MAC Address Sessions displays all active MAC addresses.



The Graphs page displays a live active chart of the current traffic throughput.

Selecting Export Log will download the log file for offline fault checking.

(This may be required by iQuila Support for fault finding)

