

IQUILA

SOFTWARE DEFINED NETWORKS

iQuila FAQ on Setting up Gateway Metrics

iQ22068r4

This Document Applies to:

iQuila Enterprise

iQuila Cloud

www.iQuila.com

Changing the Gateway Metric for Local Routing.

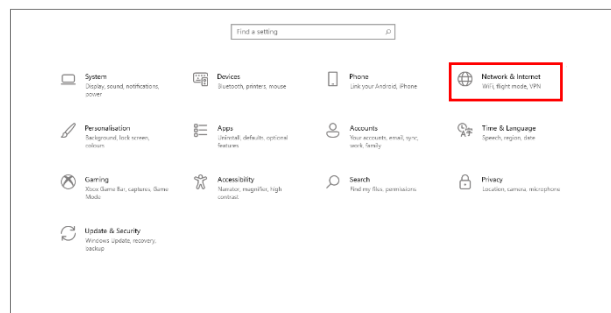
“My Internet traffic is routing out via the iQuila VEN”?
“How do I route through my local internet (ISP)”?

When Running Secure NAT, in most instances, the internet traffic routes out via the iQuila Cloud Servers. To fix this you need to manually change the “metric” on the VPN–VPN Client adaptor to route, out via your local internet connection.

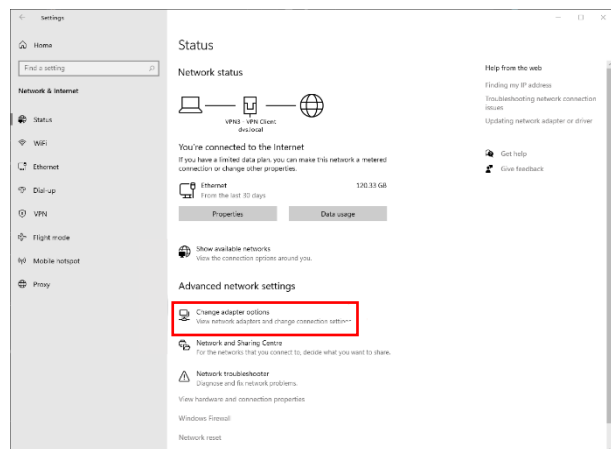
Windows 10

Open Settings.

Select Network & Internet.



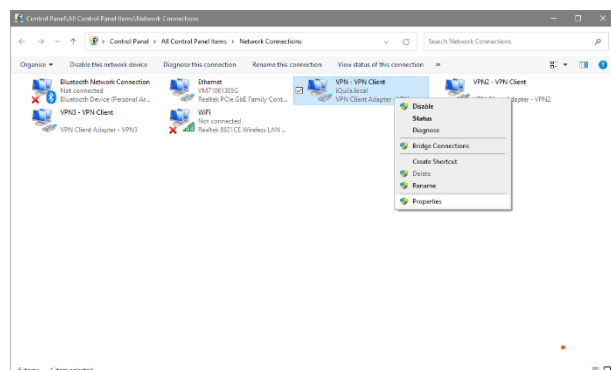
Select Change adaptor options.



All the network adaptors installed on your computer, are listed, in this window.

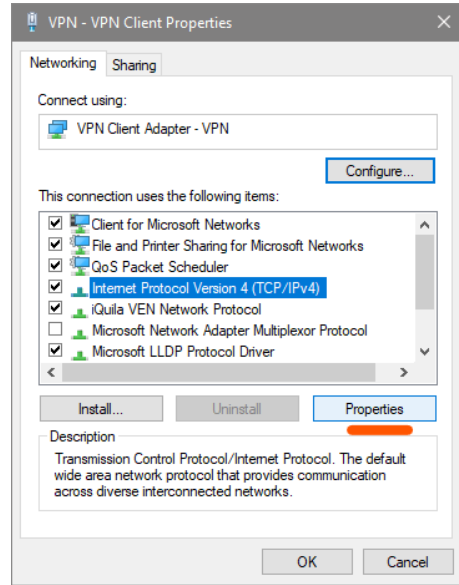
The “Ethernet” network adaptor is the main LAN link and the VPN-VPN Client adaptor is the iQuila Virtual VEN Connection to the iQuila Cloud.

Right click on the VPN–VPN Client adaptor and select Properties.



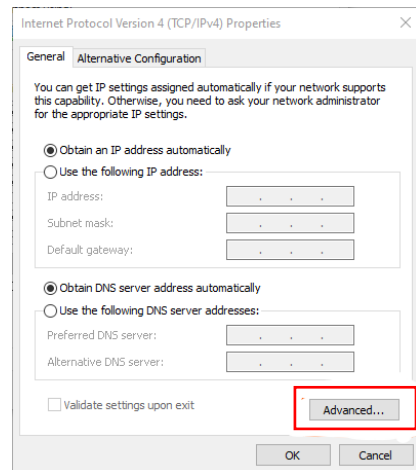
From the list choose Internet Protocol version 4 (TCP/IPv4).

Click Properties.



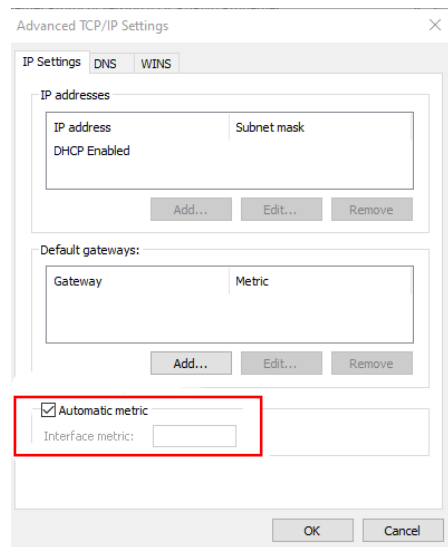
The TCP/IPv4 box properties box will display.

Click Advanced.



At the bottom, the Automatic metric is ticked by default.

Untick.

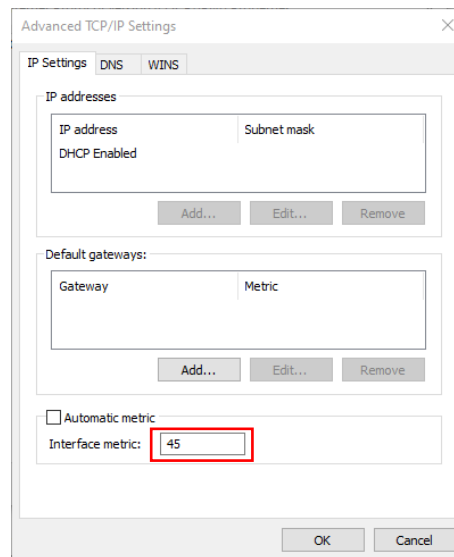


Now enter 45 into the box.

Click OK

Then Click OK once more.

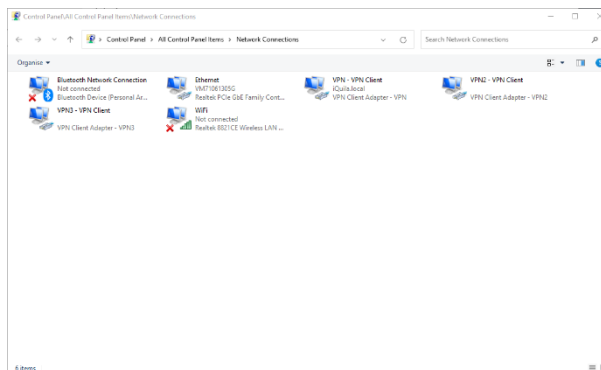
Click Close



Back to this window.

You have now changed the Metric setting on the adaptor.

All future connection made the VPV–VPN Client adaptor will result in the internet routing breaking out via your local Internet connection aka the “Ethernet” adaptor.



For a more in-depth review of how and what Metric changes do please read the following article from Microsoft.

<https://docs.microsoft.com/en-us/troubleshoot/windows-server/networking/automatic-metric-for-ipv4-routes>

When bridging connections, you may experience issues when remote system returns the office network where a bridge is installed, where the remote system running the iQuila client software sends data over the iQuila network as a preference, this can be resolved by entering the following commands.

Please change the relevant subnets to suit your network:

```
route add -p 10.0.0.0 mask 255.255.255.0 <gw> metric 1 if <eth0>
route add -p 0.0.0.0 mask 0.0.0.0 10.0.0.0 <gw> metric 1 if <eth0>
```