

IQUILA

SOFTWARE DEFINED NETWORKS

iQuila Enterprise Client Installation

iQ22052r3

This Document Applies to:

iQuila Enterprise

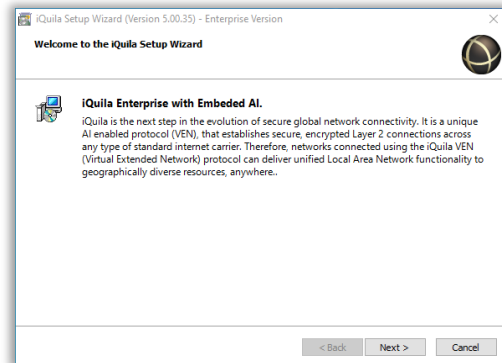
www.iQuila.com

Installing iQuila Enterprise Client

First download the Client installation file via the link in the email you received or via this link [Enterprise Cloud Client](#)

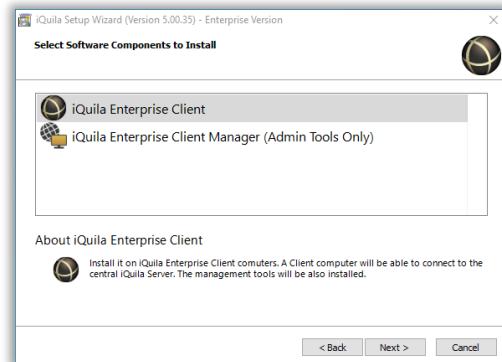
Launch the installation process by double clicking on the file.

Click Next.



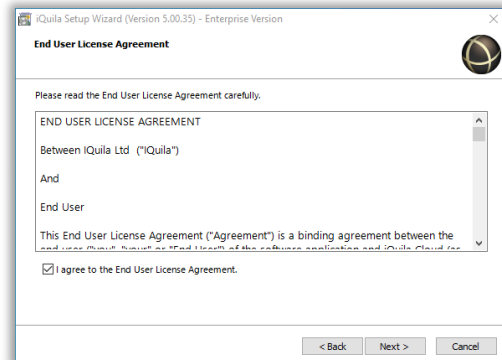
Select iQuila Enterprise Client.

Click Next.



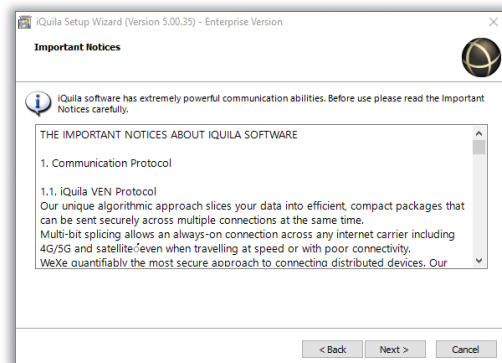
Accept the user License Agreement

Click Next.



Option to read the EULA.

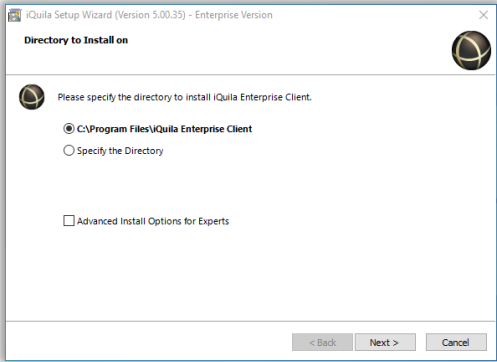
Click Next



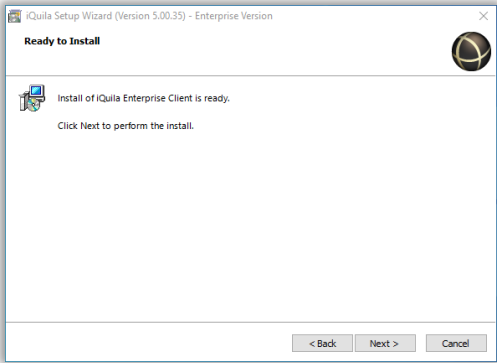
Option to change where to install this Client if the default location is not appropriate.

If required there is an advance install option to allow further installation options.

Click Next if accepting the defaults.



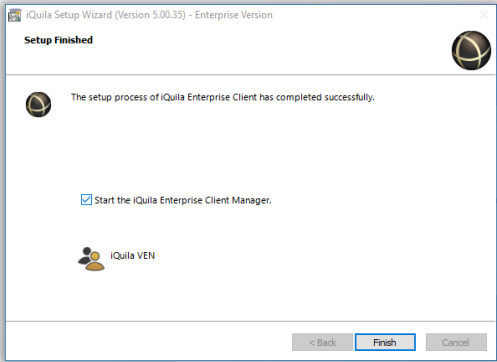
Click Next to start the installation.



Installation as finished.

The Start iQuila Enterprise Client Manager box is ticked by default.

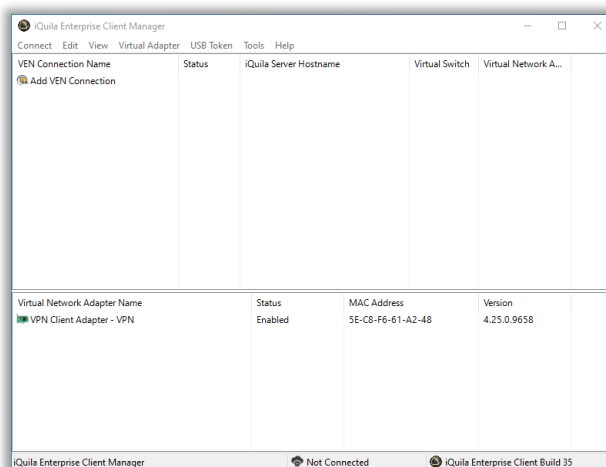
The Client Manager is ready to open when Finish is Clicked.



iQuila Enterprise Client Manager

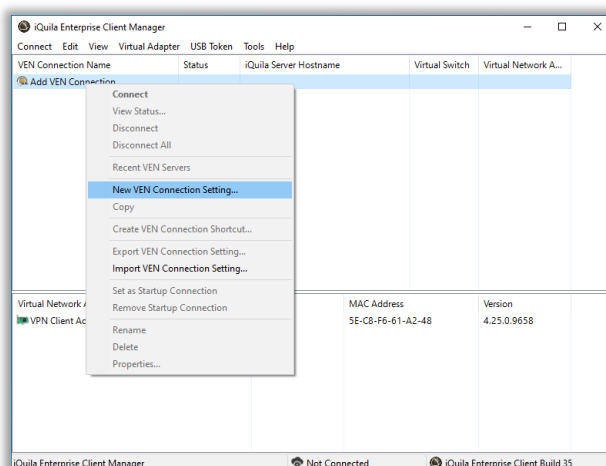
This is the main display when the client first launches. Note at this point there are no VEN connection entries.

There are two ways to add a VEN Connection. Manual and via an Imported Config file.



To manually add a new VEN. Right Click on Add VEN Connection and select New VEN Connection Setting.
(See section on Manually adding a New VEN Connection).

To Import a VEN Connection Setup. Right Click on Add VEN Connection and select Import VEN Connection Setup or double click on the config file and select import when asked.
(See section on Importing a New VEN Connection).



Manually Adding a New VEN Connection.

Please read the email that contains the information on what to set here.

The following is a walk through on manually setting up a VEN Connection.

Start with entering a name for the VEN connection = **Settings Name**

Host Name: The server address that the Switch resides on something like R#.clustermaster.azure.iquila.com

Port Number: Defaults to 443.

Virtual Switch: The name of the Switch that the device is connecting to. e.g. Switch2057

User / Device Name: This is the name of the created device. Normaly the name of the host that the iQuila Client is being installed on. e.g. Bobs_Laptop

Password: Is the assigned password when the device was create.

These details can be found on the email sent when the device was created.

Most of the options on the properties page are default settings and do not require any changes. One area that a change needs to be made is **Advance Settings**.

Here a optional change can be made to the **Number of TCP Connections**.

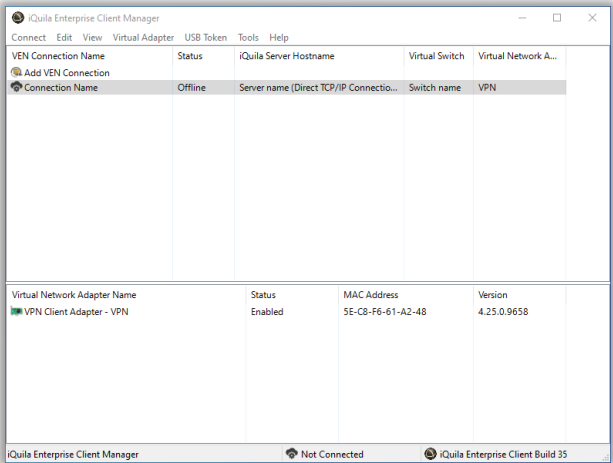
This will be set to 1 by default, suggested change is to start with 8, 16 or 32.

Other options would be recommenced done with the help of iQuila support.

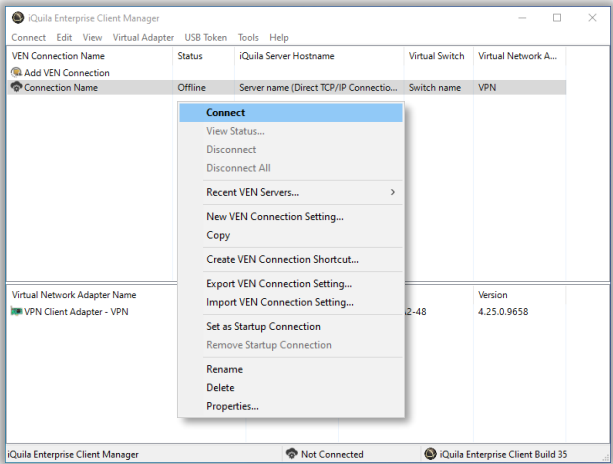
Click OK when done.

Click OK to finish.

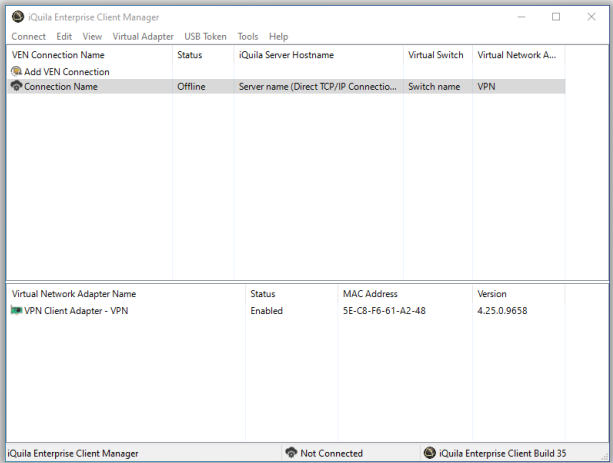
The VEN Connection is now setup and ready to connect.



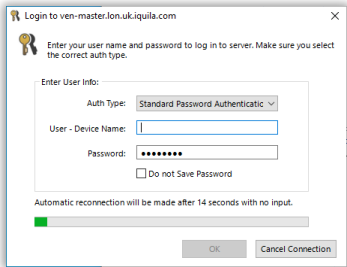
Right Click the VEN Connection and select Connect.



A popup will launch connecting to the DHCP to obtain an IP Address and the connection status will change to connected.

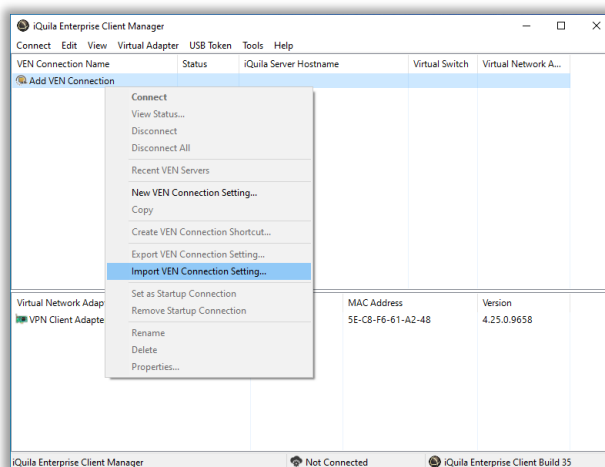


If this box appears then please check the device name and password as been typed correctly.

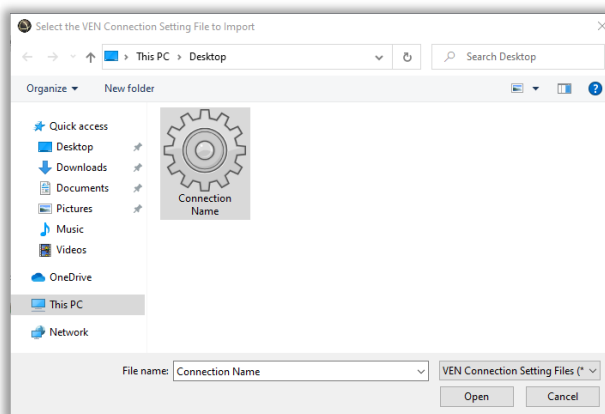


Importing a VEN Connection Setup.

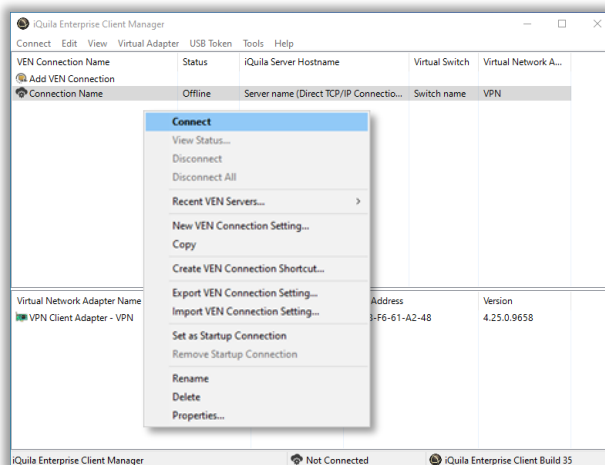
To Import a config file right click on the Add VEN Connection and select Import VEN Connection Setup or double click on the config file and just answer Yes to import the VEN config file.



Navigate to where the config file was downloaded or stored. Select the file and click open. The file will setup a VEN Connection for that device based on information entered when the device was created. e.g. Host Name, Switch Name, Device Name, Password.



The connection as been imported and ready to connect.



Enter the Device name and Password

Click OK to connect.

If this should keep popping up the check that the device name and password is correct.

